

EXHIBITIONS AT DIMBOLA 2011

14 JANUARY TO 27 MARCH

Shell Valentine Exhibition



This exhibition traces the heart-strewn history of the Valentine Card from the early 19th century onwards. It has romance, sentiment and gushing sincerity with the liberal use of satin ribbon and gilt cupids. In contrast there are also satirical cartoons and cruel verse, expressing the bitterness, and disenchantment of loves lost.

21 JANUARY TO 17 APRIL

Mark Sadan

Shadows Of Delight



Stephen Perloff, noted American photographic curator, photo historian, publisher and

editor of Photo Review has curated this exhibit, 'Shadows of Delight'. In his comments he mentions Sadan's varied creative journey as an actor, director and film maker with work on show at the Museum of Modern Art - "Sadan has written that he works with what enchants him, that he follows his heart's passion..."

4 FEBRUARY TO 3 APRIL

Keith Wilson



Drawings and paintings to accompany 'Wayside Shrines' by Paul Muldoon.

In 2009 Keith Wilson was commissioned by The Gallery Press to produce a series of

images to accompany 'Wayside Shrines', a limited edition publication of poems by Paul Muldoon. Other related drawings are also included in the exhibition.

Award winning artist Keith Wilson is a member of the Royal Ulster Academy and his work is in many public and private collections worldwide.

4 FEBRUARY TO 3 APRIL

Koo Stark

Contrasts

Renowned photographer, actress and long term patron of the JMC Trust, Koo Stark, will be exhibiting a retrospective collection of portraits.

Having developed an instinct for taking portraits, whether commissioned or on a more personal theme, Koo looks to capture a moment which is both intimate and revealing. The images on display give a dramatic insight into what inspires and intrigues the work of Koo Stark illustrating what has led to an increasingly high profile as a photographer amongst the general public.



8 APRIL TO 3 JULY

Parkinson Photographs The Age Of Innocence



British photographer Norman Parkinson operated in a world of high fashion, but he was also drawn to the carefree innocence of children, capturing a

lost era when childhood was an optimistic and untarnished experience. Inspired by Julia Margaret Cameron's own photographs, and Cartier Bresson's photo-journalistic style, Parkinson believed in allowing the unexpected to happen, with magical results. Curated by the Angela Williams Archive, this collection of Parkinson's images of childhood, including many rare and previously unseen prints, offers a fresh insight into his development as an artist.

1 APRIL TO 26 JUNE

Billy Childish, David Wise, Nhung Dang and Wolf Howard

THE IGGP, SOUTH-EAST SECTION

Dark Chamber



Dark Chamber is a selection of works from Billy Childish, David Wise, Nhung Dang and Wolf Howard. In a largely digital world, this exhibition uses the simplicity of one of the earliest forms of

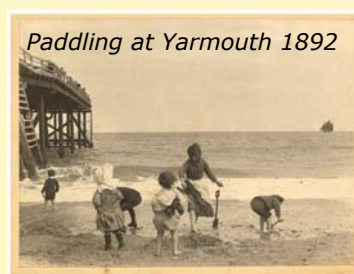
photography - the pinhole camera - to capture daily lives, travels and artistic interests of the four photographers.

22 APRIL TO 26 JUNE

Paul Martin Victorians At The Seaside

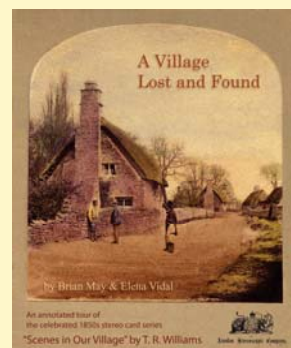
In 1892, the photographer Paul Martin made a trip to Yarmouth, the popular seaside resort in Norfolk.

Disguising his camera as a leather box, he was able to record his fellow holidaymakers unnoticed, providing us with a fascinating insight into life in Victorian England as well as one of the earliest and most memorable series of holiday snapshots.



1 JULY TO 25 SEPTEMBER

Brian May and Elena Vidal A Village Lost And Found



Brian May renowned guitarist / song-writer of the legendary band Queen and photographic historian Elena Vidal present a selection of 3D images from an exquisite set of original 1850s stereo-photographs called 'Scenes in our Village' by TR Williams. Taken from Brian and Elena's book *A Village Lost & Found* these evocative images show life in an Oxfordshire village 150 years ago.

8 JULY TO 2 OCTOBER

Chris Gabrin

From 'Hear' To Photography - Ten Years Through The Looking Glass.



Chris Gabrin first became obsessed with music at the age of twelve, and then discovered his only other obsession, Photography.

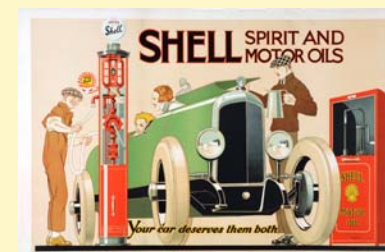
In 1970 after graduating from Art College, Chris was

contacted by an old friend who shared a flat with a guy who had joined a band and said "they need some pictures"... Thus began Chris's photographic rollercoaster ride through one of the most exciting decades in modern music. This exhibition encompasses 10 years of Chris's photographic career in the music industry with images of bands and music artists including Brinsley Schwarz, Ian Dury, Elvis Costello, The Damned, The Stranglers, Motorhead, Blondie, The Buzzcocks and many, many more.

7 OCTOBER TO 15 JANUARY 2012

Shell Advertising Art Collection

This unique and fascinating exhibition on loan from the Shell Collection at The National Motor Museum, Beaulieu Hampshire shows a



selection of art-works from 1920s onwards, including original paintings, posters and press advertising.

Your car deserves them both, 1926, René Vincent

7 OCTOBER TO 8 JANUARY 2012

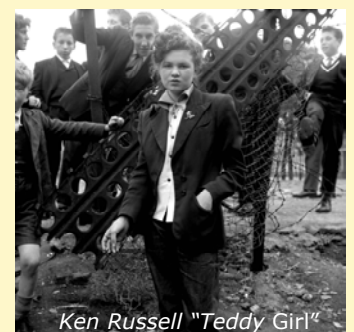
Ken Russell

London Lost And Rediscovered

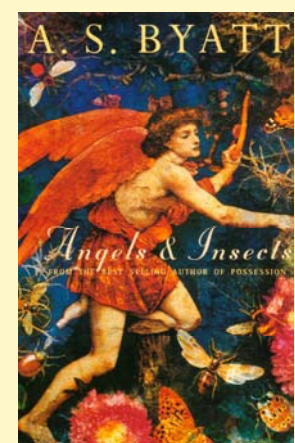
Ken Russell was a film fan from the start but his early ambition to enter the industry never got further than the studio gates. So he turned to

photography, from surrealism to

reportage. Shortly to become a controversial director of international repute, he never touched his Rolleicord again, but this exhibition is a glimpse of an impressive talent.



14 OCTOBER TO 8 JANUARY 2012



Liz Cooke Innervisions

Artist Liz Cooke combines painting, collage and photography to create richly layered images inspired by the hidden realms of dreams and visions. This exhibition showcases her illustration work from hand-collaged book-

jackets of the 1990's and her later digitally re-worked series "The Unseen" and "Temple Dreamers", to mixed media work from the present day.